



2025-2026 Pre-K
ORIENTATION
WoodCreek Elementary

WCE Admin. Team



(Left to Right): Mrs. Graham, Mr. Mosher, and Mrs. Guevara



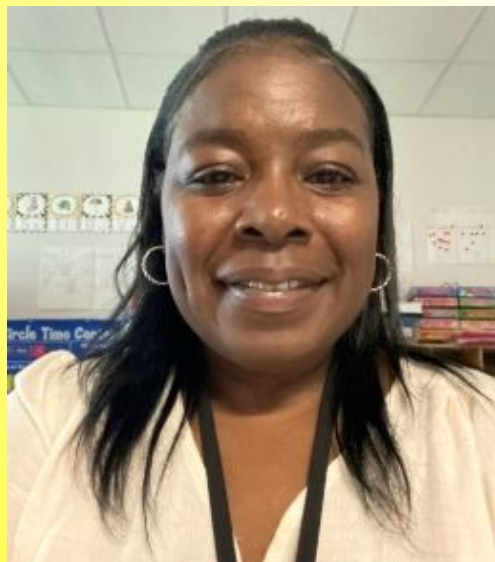
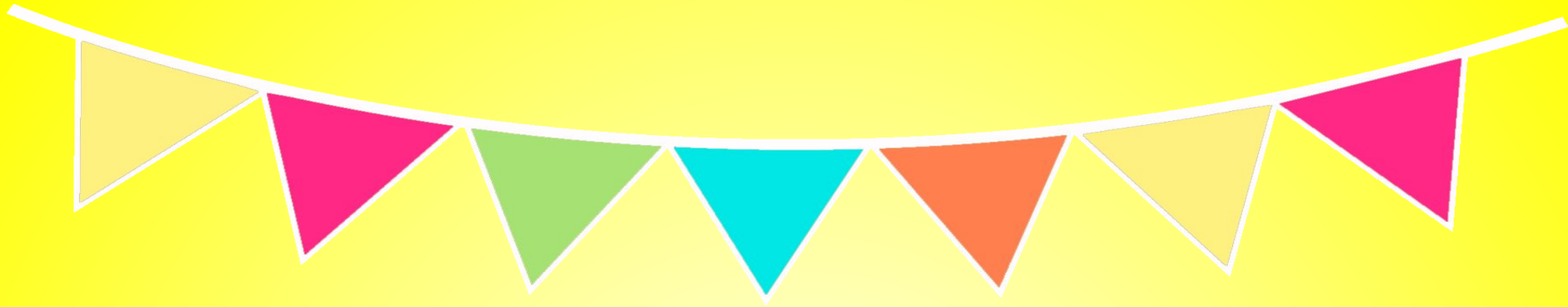
Our Pre-K Teacher and Teacher's Aide



Mrs. Wright
Teacher



Mrs. Lopez
Teacher's Aide



Mrs. McCoy
Teacher



Mrs. Reyes
Teacher's Aide

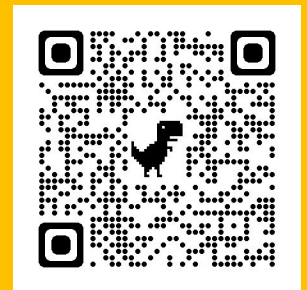
WCE PTA

2024-2025 Executive Board



Top 5 List from WCE PTA

1. Get Connected to WCE PTA:
 - Visit www.myrangerpta.org
 - Register your family on our website
 - Find us on Facebook @ [WoodCreek Elementary PTA](#) or on Instagram @ [myrangerpta](#)
 - Join the Kindergarten Parent Facebook page to connect with other parents. Search for "[WoodCreek Rangers Incoming Kindergarten 2025-2026](#)"
2. Order School Supplies Through PTA
 - Ordering info coming in May at www.myrangerpta.org
 - Each supply pack includes a PTA membership
3. Join PTA!
 - Visit myrangerpta.org after July 1st to purchase your membership for the 2025-2026 school year.
4. Spirit Wear
 - Discounted styles on sale now (Cash, Check, or Credit Card)
 - '25-'26 Styles on sale in May for pre-orders
 - Order at myrangerpta.org
5. Online Auction
 - Starts April 3 and closes on April 16
 - Items for next year will be included
6. Get Involved and VOLUNTEER!
 - Email us at President@myrangerpta.org with any questions
 - Dads can get involved with WATCH D.O.G.S.



Registrar



ClaudiaHoffmann

Registration Information



- To qualify for Pre-K, the child must reside in Katy ISD and be four years old on or before September 1st of the current school year.
- Click the image below to go to our [PowerSchool Online Registration](#) website to begin the registration process.
- Online registration for the Katy Independent School District Prekindergarten program for the **2025-2026** school year will open on **March 31, 2025**. Parents must complete the online registration process through Katy ISD's PowerSchool Registration website in order for their child to be screened for program eligibility. The Katy ISD Prekindergarten program follows the state Pre-K guidelines which focus on oral language development, reading and math readiness, as well as science and social studies knowledge and skills. Click the Katy ISD Prekindergarten program link for a list of eligibility requirements or call the Office of Interventions at 281-237-7062.

Privacy Codes

When registering, you will be asked about Privacy Codes. Please be aware that your child's privacy code will default to "N". You MUST change it to "Y" or "O" if you want your student's picture or name to be included in various publications. Please note, if you choose "N," your child will not be able to be included in any pictures taken, this includes the yearbook.

3. What are the privacy code options from which a parent/guardian can choose?

There are three privacy codes from which a parent/guardian may choose: Y - Yes, O - Other, and N - No. Please refer to the chart for the implications of each code.

Privacy Code Selections and Implications	"Y" Yes	"O" Other	"N" No
School-Confined Publications	YES	YES	NO
Programs for Performances	YES	YES	NO
Yearbook	YES	YES	NO
Professional School Group or Class Photos*	YES	YES	NO
Officially-designated vendors for school-related purposes	YES	YES	NO
The Public: Anyone making a public information request	YES	NO	NO
News Releases	YES	NO	NO
School Directories	YES	NO	NO
School Publications (Available to Public)	YES	NO	NO
District/Campus Webpage	YES	NO	NO
Photographs	YES	NO	NO
Social Media Platforms	YES	NO	NO

Registration Information cont.

- **REQUIRED Documents:**

- Birth Certificate/Passport (original)
- Social Security card (optional)
- Immunization Records (must have doctor's signature)
- Parent's Driver's License/Passport
- Proof of Residence

- *HUD closing statement/Lease agreement
(MUST have signatures from buyer/seller)

- *Recent Utility Bill

- (water, gas, or electric within the past 30 days)

- *Sales Contract & Loan Approval Letter

- **If a lease agreement or purchasing paperwork is provided at the time of registration, a utility bill must be provided within 30 days of occupancy



School Nurse & Nurse's Aide

Katie Porter & Erica Niemi



Immunizations & Health

- **Katie Porter**
WCE School Nurse
(281-234-0088)
- Immunizations
- Medications at school
- Health Services for students



Katy ISD 2024-2025 Texas Minimum State Vaccine Requirements for Students

5/2024

A student shall show acceptable evidence of vaccination prior to entry, attendance, or transfer to a child-care facility or public or private elementary or secondary school in Texas.

Vaccine Required (Attention to notes and footnotes)	Minimum Number of Doses Required by Grade Level See Notes Section for Specifics → → → →				*** NOTES *** Each vaccine has specific date/spacing requirements. These are outlined below:
	PPCD, ECAP, Community Speech & PK	KG – 6th	7th	8th – 12th	
Diphtheria/Tetanus/Pertussis (DTaP/DTP/DT/Td/Tdap) ¹	4 doses	5 doses or 4 doses*	3 doses 1 Tdap/Td booster within the last 5 years	3 doses 1 Tdap/Td booster within the last 10 years	For K – 6th grade: 5 doses of diphtheria-tetanus-pertussis vaccine; one dose must have been received on or after the 4th birthday. However, 4 doses meet the requirement if the 4th dose was received on or after the 4th birthday. For students aged 7 years and older, 3 doses meet the requirement if one dose was received on or after the 4th birthday. For 7th grade: 1 dose of Tdap is required if at least 5 years have passed since the last dose of tetanus containing vaccine. For 8th-12th grade: 1 dose of Tdap is required when 10 years have passed since the last dose of tetanus containing vaccine. Td is acceptable in place of Tdap if a medical contraindication to pertussis exists.
Polio ¹	3 doses	4 doses or 3 doses*	4 doses or 3 doses*	4 doses or 3 doses*	For K – 12th grade: 4 doses of polio; one dose must be received on or after the 4th birthday. However, 3 doses meet the requirement if the 3rd dose was received on or after the 4th birthday.
Measles, Mumps, and Rubella ^{1,2} (MMR)	1 dose	2 doses	2 doses	2 doses	For K – 12th grade: 2 doses are required, with the 1 st dose received on or after the 1 st birthday. Students vaccinated prior to 2009 with 2 doses of measles and one dose of rubella and mumps satisfy this requirement.
Hepatitis B ²	3 doses	3 doses	3 doses	3 doses	For students aged 11-15 years, 2 doses meet the requirement if adult hepatitis B vaccine (Recombivax) was received. Dosage and type of vaccine must be clearly documented. (Two 10mcg/1.0 ml of Recombivax) If Recombivax was not the vaccine received, a 3-dose series is required.
Varicella ^{1,2,3}	1 dose	2 doses	2 doses	2 doses	The first dose of varicella must be received on or after the first birthday. For K – 12th grade: two doses are required.
Meningococcal ¹	x	x	1 dose	1 dose	For 7th – 12th grade, 1 dose of quadrivalent meningococcal conjugate vaccine is required on or after the student's 11 th birthday. Note: If a student received vaccine at 10 years of age, this will satisfy the requirement.
Hepatitis A ^{1,2}	2 doses	2 doses	2 doses	2 doses	The first dose of Hepatitis A vaccine must be received on or after the first birthday.
Haemophilus influenza type b (Hib) ¹	1 dose See Notes	x	x	x	Complete series of Hib vaccine, OR one dose of any Hib vaccine given on or after 15 months of age. A Hib primary series and booster is two doses and a booster dose on or after 12 months of age. If the 1 st dose was received @ 12-14 months of age, then only one additional dose is required. Children 60 months of age and older are not required to receive Hib vaccine.
Pneumococcal conjugate Vaccination (PCV) ¹	1 dose See Notes	x	x	x	A complete series of PCV (three doses + a booster >12 months) or Children 24 months through 59 months meet the requirement if they have at least three doses with one dose on or after 12 months of age, or two doses with both doses on or after 12 months of age, or one dose on or after 24 months of age. Otherwise, one additional dose is required. Children 60 months of age and older are not required to receive PCV vaccine.

¹ Receipt of the dose up to (and including) 4 days before the birthday will satisfy the school entry immunization requirement.

IMMUNIZATIONS

- Texas Department of Health requires all school age children to be up to date on immunizations. Children are excluded from school until the required immunizations are obtained and a copy is given to the school nurse. Immunization requirements can be found at: www.katyisd.org
- Contact school nurse with questions.



24 HOUR RULE

- If your child has a FEVER (100° or above), VOMITING, or DIARRHEA, Katy ISD guidelines state that he or she must stay home for 24 hours.
- To give your child time to recuperate and to protect classmates and teachers, the child must be symptom free without the aid of medications for a 24-hour day before returning to school.



MEDICATIONS



- Children may not carry medicine with them at school - not even cough drops. If your child needs medicine at school, send a note completed by a parent or the physician plus the medicine in its original container. You or your child can drop it off in the clinic before going to class.
- Three times a day medications are not given at school. All doses can be given at home. This was determined by Pediatricians in the area and is a District Policy.
- The official form can be found at the Katy ISD website.



Click the image to go to the
Medication Administration Form



CLINIC



- Vision and hearing screenings will be done in the fall.
- During online registration, there will be a place for you to provide phone numbers where you can be reached as well as local emergency contacts who can be reached if you are unavailable.
 - It is vital that the phone numbers are accurate.
 - Please give the phone numbers an order as to who should be called first, second, etc.
 - Please fill out the Health Inventory. If your child has a condition you need to speak to the nurse about, please call or come by at the beginning of the school year.

Welcome To Pre-K



A Typical Day in Pre-K



Pre- K/ ECSE Schedule



7:50 - 8:00	Morning Routines & Daily Announcements
8:00-8:15	Community Circle (M,W, F) & Purposeful People (T & Th)
8:15-8:40	Calendar
8:40- 8:55	Literacy Circle
8:55- 9:30	Literacy Rotations
9:30- 9:55	Recess
10:00-10:40	Lunch
10:45- 11:00	Read to Self & Bathroom Break
11:00-11:10	Read Aloud
11:15- 11:45	Specials
11:50-12:05	Math Circle
12:05- 12:45	Math Rotations
12:45- 1:30	Rest Time
1:30-1:50	Centers
1:50-2:00	Snack & Pack
2:10-2:25	Sunshine Break
2:30-2:45	Centers
2:45-2:50	Pack -Up
2:50-3:00	Dismissal Announcements

Recess/Snack

- 15 minutes of Snack & a Sunshine Break
- 20 minutes of Recess



Lunch

- 30 minutes each day
- Current Price: \$2.25/tray
- Children can either bring a lunch from home or purchase a school lunch.
- I.D. badges are used to purchase lunches.
- Cafeteria monitors and volunteers are in the cafeteria each day.
- Prepayment is encouraged! Please [CLICK HERE to access Pay-N-Go.](#)
- We ask that you please **NOT** come to eat lunch with your child for the first 2 weeks of school as they transition into a new routine and environment. Midday separation is extra challenging in the beginning!



Librarian & Library Clerk

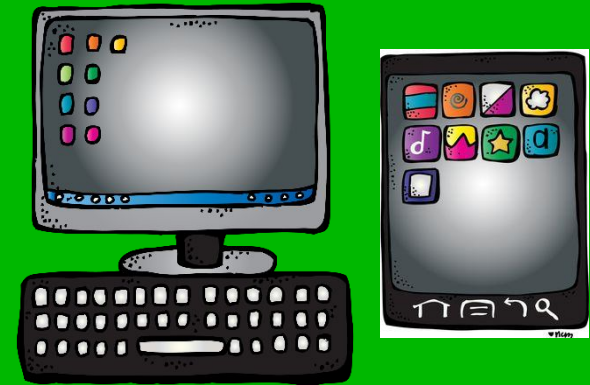
Erin Durham & Emilie Watson



Library and Technology



- I-Pads in the classroom that reinforce and enrich literacy and math skills



- Weekly library checkout (1 book for Pre-K)
- Library lessons - once every 3 weeks

Library - Birthday Book Club



- Students can pay \$20 (via Pay N' Go app) to donate a brand new book to the library.
- A book plate with the student's name and birth date is placed in the new book.
- Students in the Birthday Book Club appear on the morning announcements and are allowed to be the 1st to check out the book.

School IDs/Backpack Tags (SMART tags)

- All Rangers are required to wear a school ID during the school day. Katy ISD provides a school ID at the beginning of each school year.
- If a school ID is lost, a new ID must be purchased. The direct link to purchase if needed.

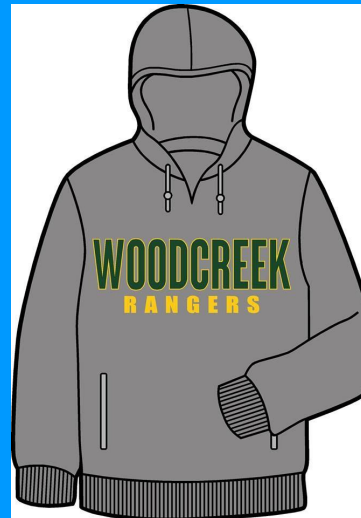
<https://katyisd.revtrak.net/elementary-schools/elementary-r-z/woodcreek-elementary/wce-id-badge/>

General Information



Put Names on EVERYTHING

- Backpacks
- Lunch kits
- Snacks
- Coats
- Water bottles



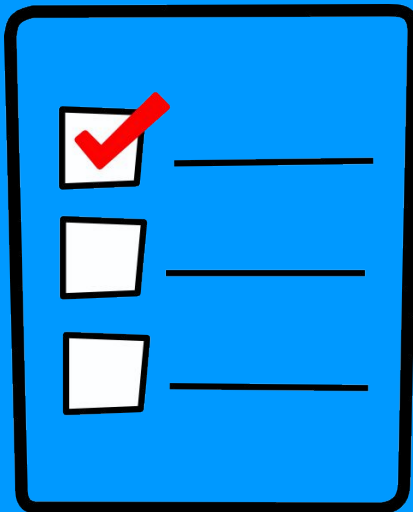
Backpacks

- Large enough to hold folders and a library book
- Easy to open and close
- No rolling backpacks PLEASE!



School Supplies

- Follow recommended school supply list to purchase supplies (highly recommended to purchase PTA school supplies)
- Please DO NOT label supplies with your child's name
- Supplies will be used as community supplies
- Pre-ordered supplies will be delivered to classrooms before school starts



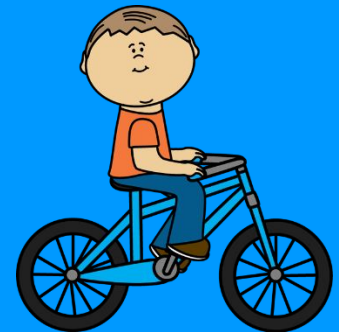
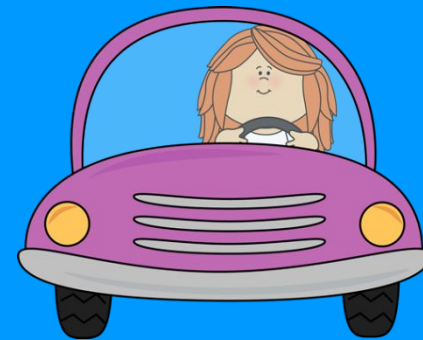
Dressing for School

- Policy is listed on the KISD website
- Elastic pants/shorts are best at the beginning of the year
...remember potty time 😊
- Flip flops are strongly discouraged
- tennis shoes are best, especially velcro.
- Ziploc baggie of extra clothes, including underwear and socks, for those "just in case" moments (kept in backpack)



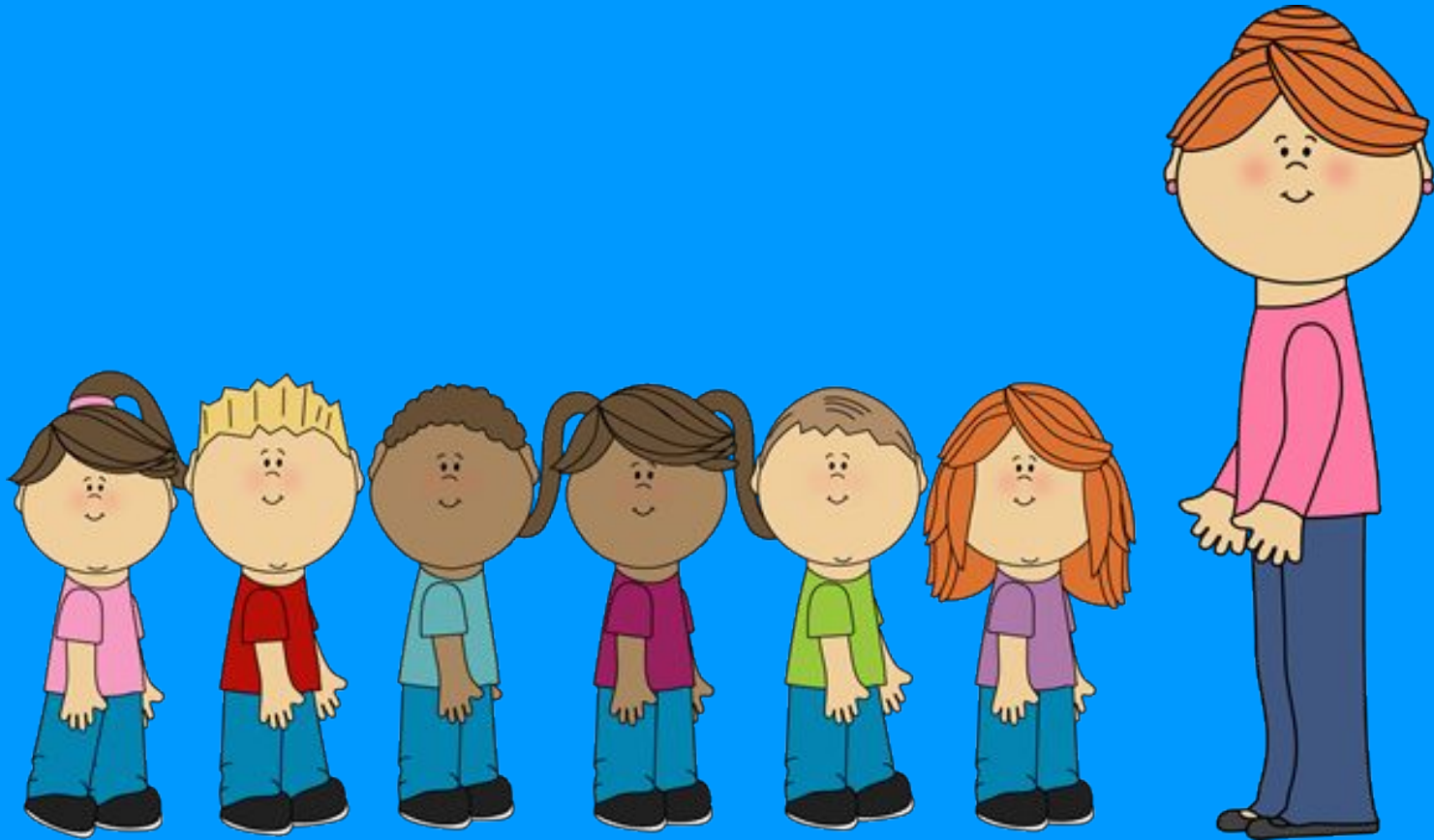
Transportation

- How will your child go home on the first day and rest of the year?
 - Car (Parent Pick-Up)
 - Hiker/Biker
 - Daycare
 - **Bus transportation is not available for Pre-K
- Try to keep the mode of transportation consistent day to day.
- Please decide your child's method of transportation home prior to Meet the Teacher.



1st Day of

Pre-K



Things To Do: "Parents"



- School Hours (currently) 7:50 a.m.- 3:00 p.m.
 - *Students can start entering the classroom at 7:25 a.m.
- You can bring your child to school and walk him/her to class on the first day 😊
- Receive forms, review, complete, and return as soon as possible
- Confirm method of transportation going home
- Make sure your child has lunch money (\$2.25 -current price) or a packed lunch from home
- Quickly and cheerfully exit! 😊



Dates to Remember

- Registration : Opens March 31, 2025
- Meet the Teacher : TBD
- First Day : August 13th
- Curriculum Night : TBD

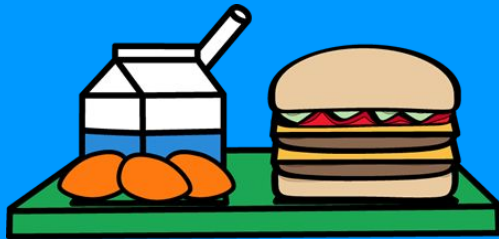
(Topics to be covered: Pre-K Curriculum and expectations)



Final Reminders



- Please plan to attend Meet the Teacher 😊
- Send your child daily with a:
 - backpack
 - lunch (unless he/she is purchasing a school lunch)
 - water (easy open/close top)
 - 1 simple snack (packed separately from lunch and does not require a utensil)



We are looking forward
to a **FABULOUS** year!

